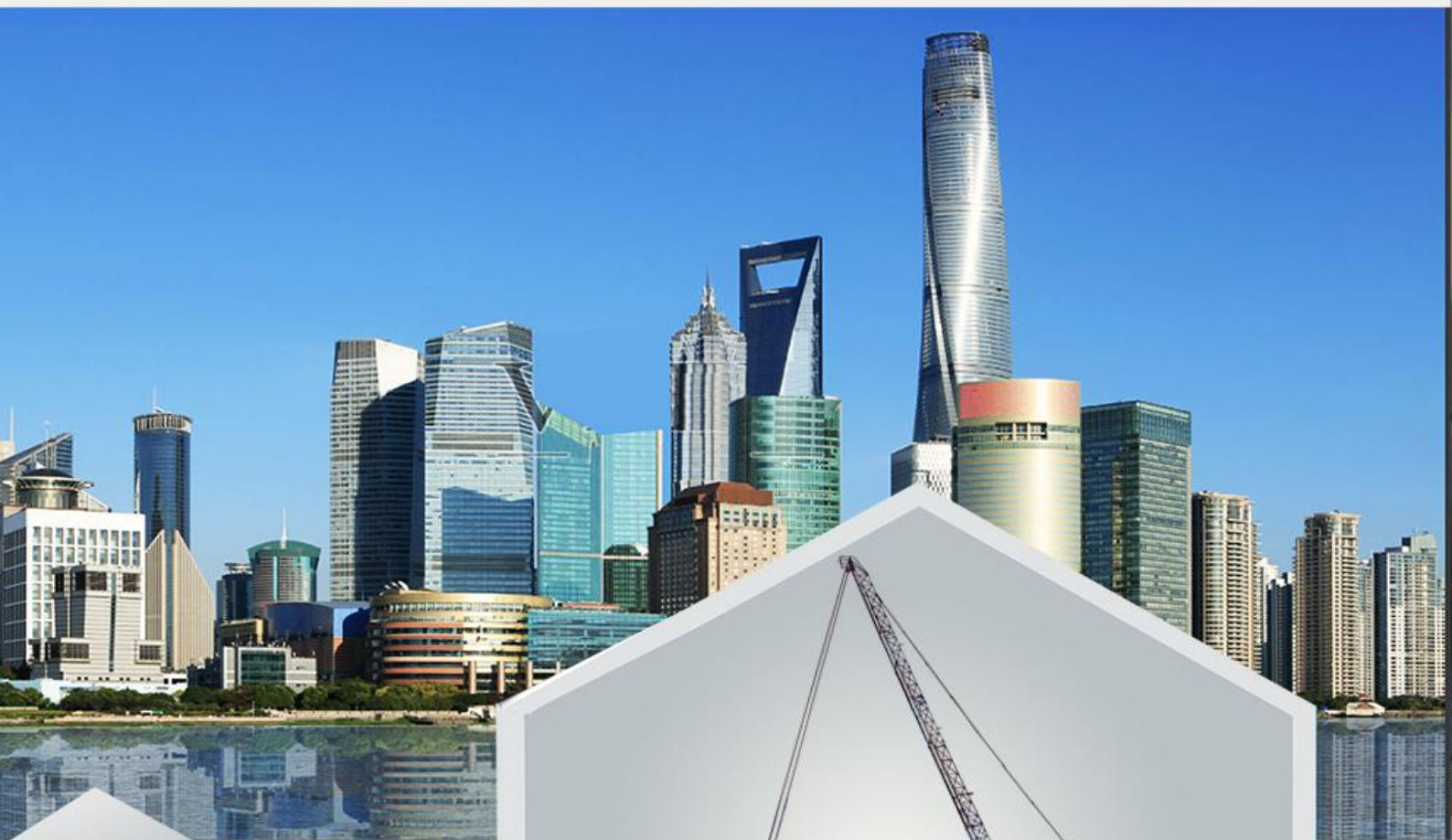




KAMUJA

TOWER CRANE QTD150-8



Hunan Kamuja Machinery & Equipment Co.,Ltd



A Certificated Company of GB/T 19001-2016
ISO 9001:2015



Manufacture Tower Crane since 1958



Official Vendor



FACTORY INTRODUCTION



The manufacture is founded in 1958, is an industry-leading enterprise integrating the R&D, manufacturing, installation, transformation and maintenance of construction hoisting machinery, and also one of the first four manufacturers in China to obtain the manufacture license o construction machinery.

Two production bases in south of China, covering an area of 360,000 square meters and equipped with more than 1,200 sets of advanced processing equipment, with an annual output of over RMB 3 billion.

TYPES



Outer cage type tower crane:

The standard sections of the tower body can be installed and removed as a whole, making such a tower crane easy to connection and reliable in operation, quick in lifting up and down.



Internal climbing type tower crane:

The tower crane is installed inside a building and climbs upward with the help of the building structure without any independent foundation, additional attachment devices or standard sections. Such a tower crane features a low cost, a wider construction coverage area and higher work efficiency. Furthermore, can be transformed into an attached tower crane at a low cost.

CUSTOMER REFERENCE

LOGAN
龙光



vanke 万科

HUNAN KAMUJA MACHINERY & EQUIPMENT CO.,LTD.

Room 818, 4th Floor, Chang Tong Logistic Center, No.18 Qingzhuhu Road, Changsha, Hunan, China

Tel: +86 0731 88677248

E-mail: juana.yan@kamuja.cn

www.kamuja.cn

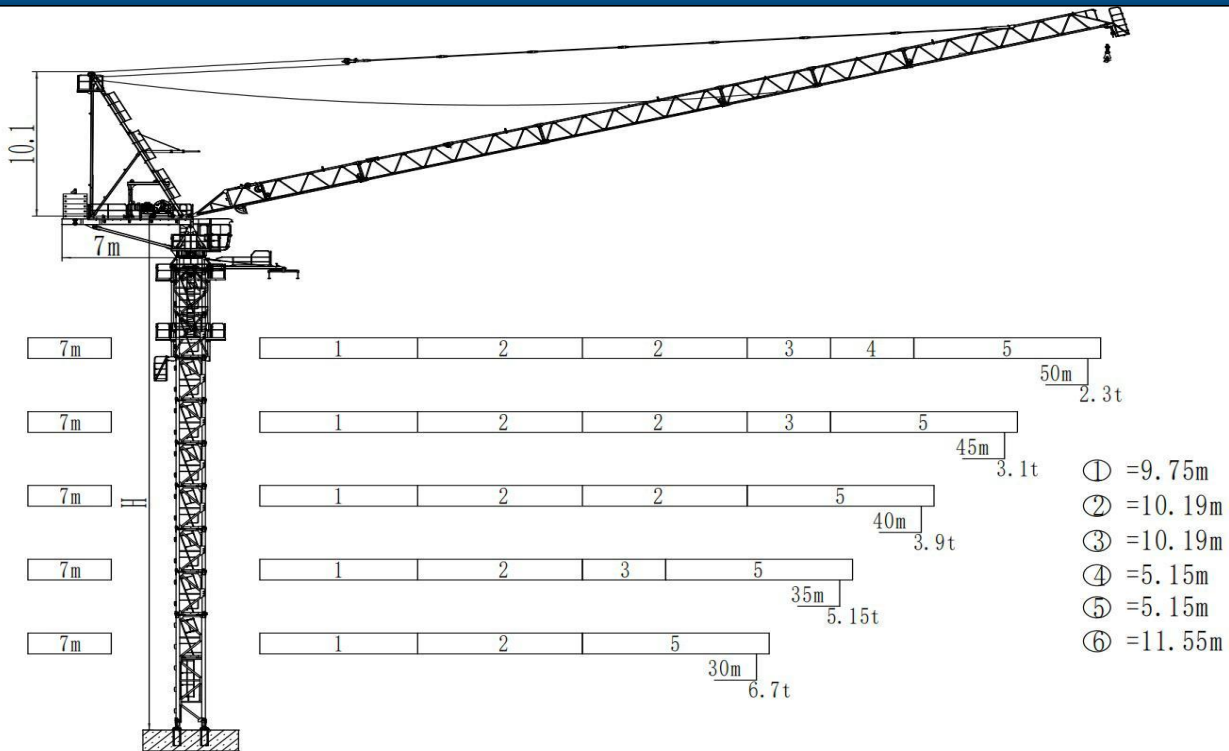


Certificated Company of GB/T 19001-2016/ISO 9001:2015

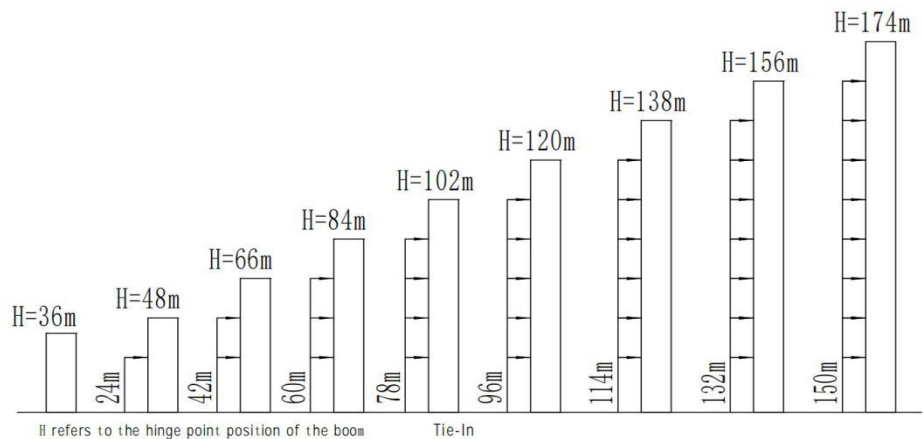
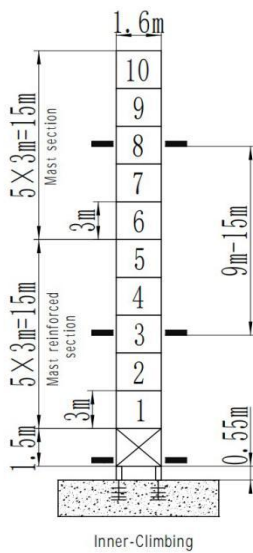


QTD150-8 Luffing Tower Cranes

Drawing of Tower Crane Structure



TOWER



Sectional dimensions of tower section(m×m×m)	Reinforced section	Standard section	FSH 15° /85° (m)	Max.Height
1.6*1.6*3.0(Out Cage)	0	8	46/84	184/222
1.6*1.6*3.0(Inner)	5	5	46/84	184/222

HUNAN KAMUJA MACHINERY & EQUIPMENT CO.,LTD.

Room 818, 4th Floor, Chang Tong Logistic Center, No.18 Qingzhuhu Road, Changsha, Hunan, China

Tel: +86 0731 88677248

E-mail: juana.yan@kamuja.cn

www.kamuja.cn



Certificated Company of GB/T 19001-2016/ISO 9001:2015



Load Diagrams

R (m)		Load (t)	R (m)	20.0	22.5	25.0	27.5	30.0	32.5	35.0	37.5	40.0	42.5	45.0	47.5	50.0		
50.0		4.00	4.5-39.0	4.00									3.70	3.40	3.00	2.60	2.30	
		6.00	4.5-31.0	6.00					5.55	4.85	4.25	3.65	3.35	2.95	2.55	2.25		
		8.00	4.5-25.5	8.00			7.10	6.20	5.50	4.80	4.20	3.60	3.30	2.90	2.50	2.20		
Separator																		
R (m)		Load (t)	R (m)	20.0	22.5	25.0	27.5	30.0	32.5	35.0	37.5	40.0	42.5	45.0				
45.0		4.00	4.1-39.5	4.00									3.80	3.50	3.10			
		6.00	4.1-31.5	6.00					5.65	4.95	4.35	3.75	3.45	3.05				
		8.00	4.1-25.5	8.00			7.30	6.40	5.60	4.90	4.30	3.70	3.40	3.00				
Separator																		
R (m)		Load (t)	R (m)	20.0	22.5	25.0	27.5	30.0	32.5	35.0	37.5	40.0						
40.0		4.00	3.7-39.5	4.00									3.90					
		6.00	3.7-32.0	6.00					5.75	5.05	4.45	3.85						
		8.00	3.7-25.5	8.00			7.40	6.50	5.70	5.00	4.40	3.80						
Separator																		
R (m)		Load (t)	R (m)	20.0	22.5	25.0	27.5	30.0	32.5	35.0								
35.0		4.00	3.3-35.0	4.00														
		6.00	3.3-32.0	6.00					5.85	5.15								
		8.00	3.3-26.0	8.00			7.50	6.60	5.80	5.10								
Separator																		
R (m)		Load (t)	R (m)	20.0	22.5	25.0	27.5	30.0										
30.0		4.00	2.9-30.0	4.00														
		6.00	2.9-30.0	6.00														
		8.00	2.9-26.5	8.00			7.60	6.70										

Main Technical Parameters

Hoisting performance	Rated hoisting moment				1500kN.m			
	Maximum hoisting capacity				8 t			
Mechanism performance	2Falls		3Falls		4Falls		Motor	
	t	m/min	t	m/min	t	m/min		
Lifting	4	0~40	6	0~26.5	8	0~20	30Kw	
	1	0~98	1.5	0~65	2	0~49		
Trolleying	15°~85° ≤2.8min						30Kw	
Slewing	0~0.7 r/min						2*5.5Kw	

※ The technical information may vary by the update policy, the changes will be without prior notice.

HUNAN KAMUJA MACHINERY & EQUIPMENT CO.,LTD.

Room 818, 4th Floor, Chang Tong Logistic Center, No.18 Qingzhuhu Road, Changsha, Hunan, China

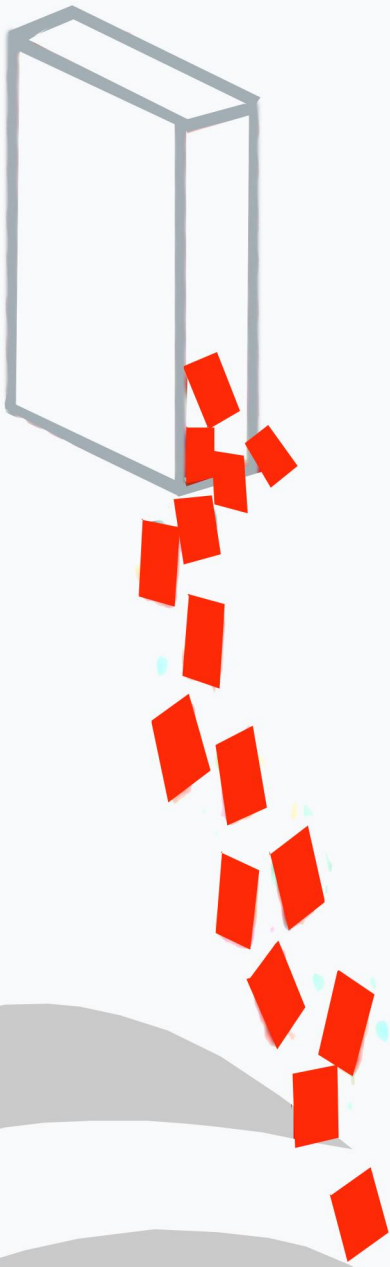
Tel: +86 0731 88677248

E-mail: juana.yan@kamuja.cn

www.kamuja.cn



Certificated Company of GB/T 19001-2016/ISO 9001:2015



Hunan Kamuja Machinery & Equipment Co.,Ltd

Address: Qingzhu Hu Road N.18, Chang Tong Logistic Center Floor 4 Room 818,
Jinxia Economic Development Zone, Changsha City, Hunan Province, P.R of China.

333 SE 2nd Avenue Suit 2000 Miami FL 33131. USA

Tel: +86 731 8867 7248 e-mail: info@kamuja.cn

Web site: www.kamuja.cn



A Certificated Company of GB/T 19001-2016/
ISO 9001:2015